

## FACILITIES FOR HIRE

### COVERED VERANDA

The spacious 2.4 m wide x 27 m long veranda facing Noyes Street has elevated views over the town centre. It is accessed by centrally located steps, and a gentle ramp from the public footpath. Smooth pavers provide a comfortable surface underfoot and for wheelchair access.

### ENTRY

The naturally lit enclosed entrance lobby is 2.95 m long x 2.8 m wide with solid doors providing access to the Conference Room and the toilets. The floor surface is vinyl and the space suited to event ticketing.

### CONFERENCE ROOM

The 3 m high suspended ceiling has acoustics that suit audio visual presentations and live music performances. The spacious 59 square metre room (9 m long x 6.6 m wide) has varnished timber flooring and is naturally lit. Three large windows are fitted with brown out blinds for audio visual presentations. Four wall mounted radiant heaters keep the room warm in the cooler months. This room can comfortably accommodate a string quartet or quintet and an audience of thirty to thirty five people.

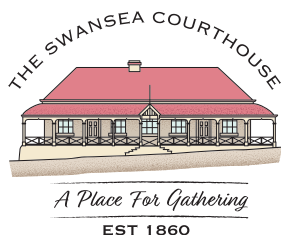
### RECEPTION ROOM

This spacious 58 square metre room has a ceiling height of 4.24 meters and is naturally lit by two 2.8 meter high windows. Two pendant electric lights provide general lighting for evening and night time use. The room has varnished timber flooring and has been repainted in heritage colours. It may be entered by the original wide timber panelled door directly from the veranda.

Air conditioning is available through a Daikin reverse cycle air conditioner. A large square cedar Victorian table is suitable for a centrepiece of flowers or for serving food.

### MEETING ROOM

Built in 1974 specifically for a visiting magistrate this 21.5 square meter room (5 m long x 4.4 m wide) has a ceiling height of 2.86 m. The naturally lit room is carpeted and has fluorescent lighting. A baby grand piano is part of this room's furniture. A small portable radiant heater maybe used to provide warmth for meetings of up to twelve people. Adjacent to this room is a unisex toilet and a kitchenette.



## FACILITIES FOR HIRE AND FEES

### KITCHENETTE

This 6 square meter space (4.3 m long x 1.4 m wide) has a vinyl floor finish and three recessed halogen ceiling lights. It is fitted with a stainless steel sink and a plumbed in instant boiling water heater. There is a large fridge with freezer. A small microwave is available. The kitchenette provides for tea and coffee making and washing up. It is not suitable for food preparation.

### TOILETS

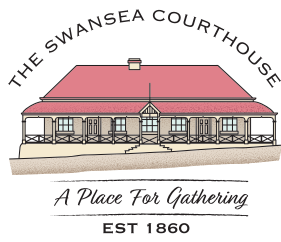
There are three separate toilets, including an accessible toilet, with a baby changing facility. There is a unisex toilet adjacent to the Meeting Room and the Kitchenette.

### FURNITURE AND EQUIPMENT

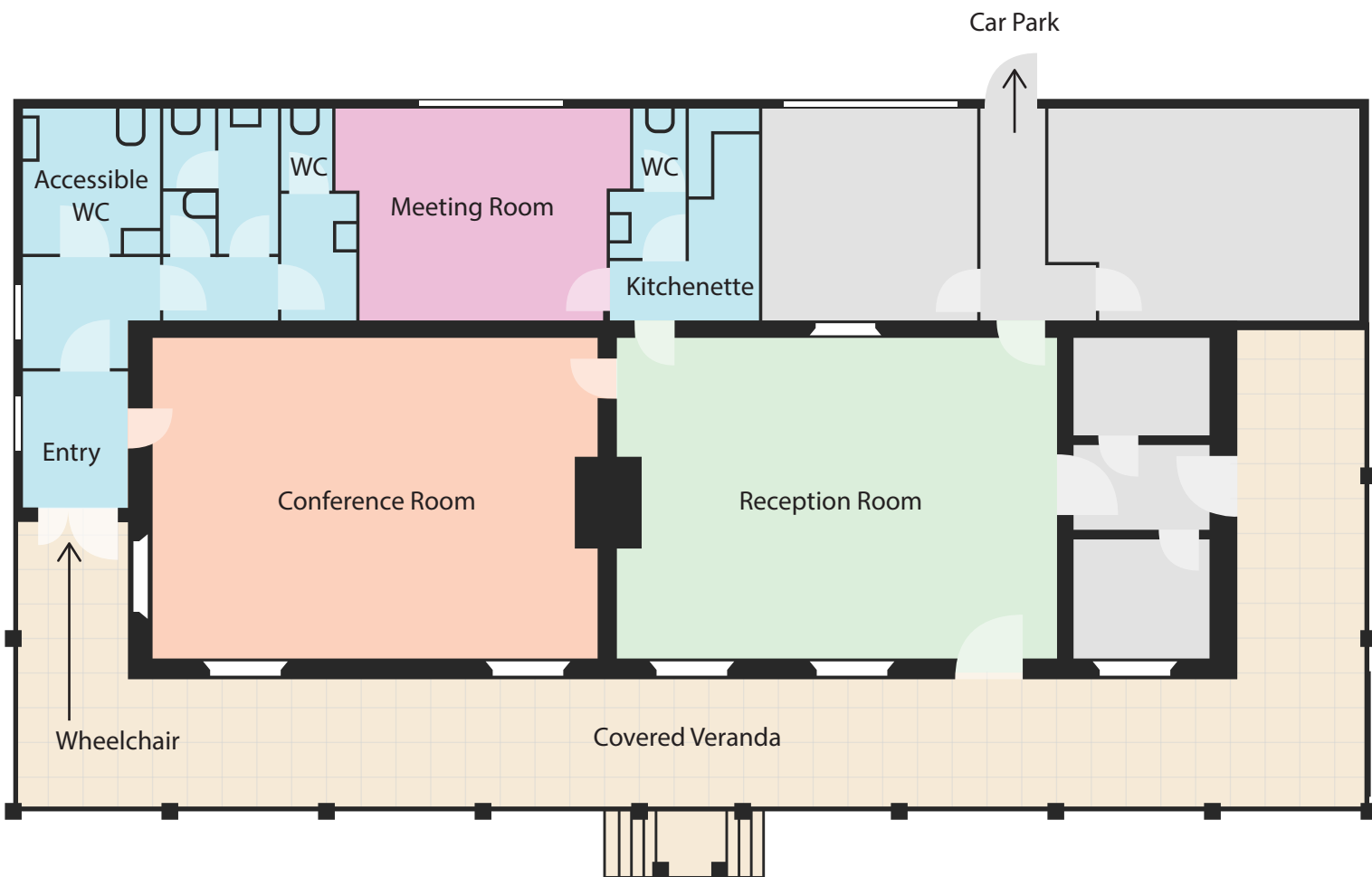
- Victorian cedar table on castors 1.4 m x 1.4 m (centre of room)
- Two wooden tables 1.5 m x 0.76 m
- Wooden table 0.9 m x 0.9 m
- Wooden table 1.2 m x 0.7 m
- 36 stackable arm chairs with blue fabric upholstery and if needed 30 extra chairs
- 12 timber arm chairs with red velvet upholstery ( Meeting Room)
- five 2 m x 1 m x 20 cm high portable stages that can be locked together or used singly to provide a raised dais.
- Two stands with adjustable spotlights for specific lighting
- Monitor for media presentations
- Wi Fi is proposed to be installed within the building in 2024
- 32 Wine Glasses

	NOT FOR PROFIT	STANDARD FEE
Hourly Rate	\$15.00	\$20.00
Half Day Rate	\$30.00	\$50.00
Full Day Rate	\$50.00	\$100.00
Evening Rate	\$30.00	\$50.00
Cleaning Fee*	\$60.00	\$60.00
Projector	\$10.00	\$10.00
Screen	\$10.00	\$10.00

\* The cleaning fee will only apply if the rooms are not left as they are found.



## SWANSEA COURTHOUSE FLOOR PLAN



4 NOYES STREET  
SWANSEA TASMANIA

